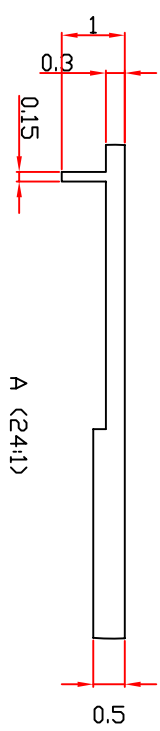
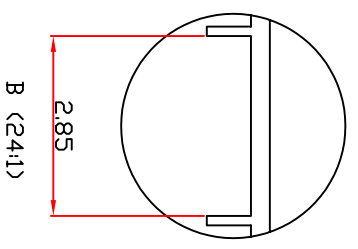
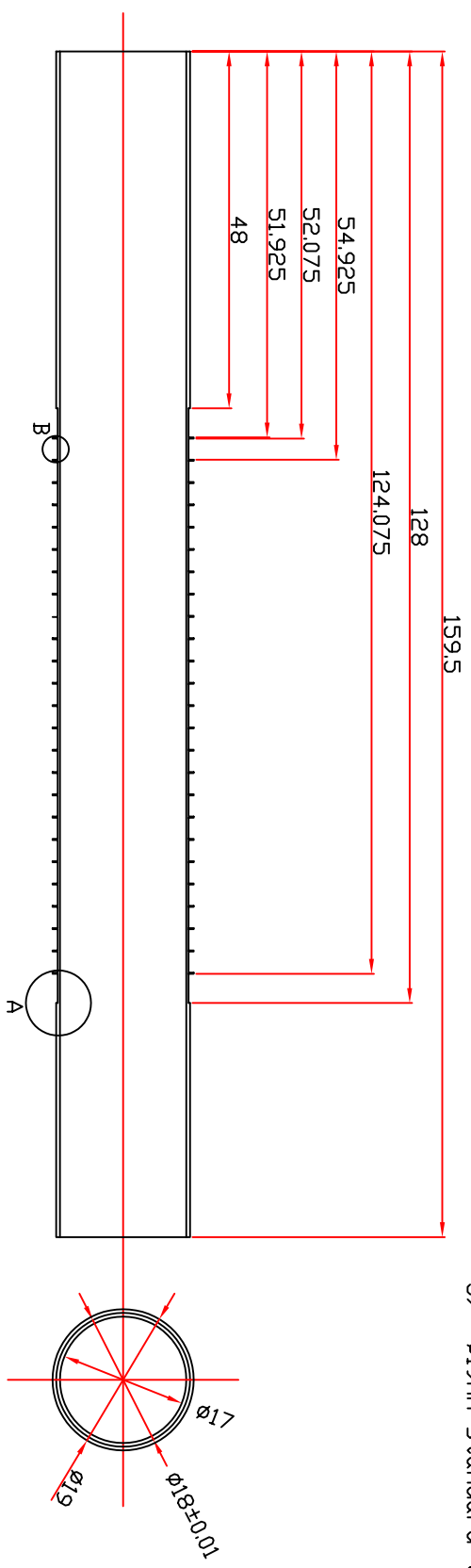


- NOTES:
- 1) Tolerances unless stated:
Linear: $\pm 0.1\text{mm}$,
Angular: $\pm 0.25^\circ$
 - 2) Remove all burrs
 - 3) Do not scale
 - 4) Surface texture $\sqrt{16}$
 - 5) $\phi 19\text{mm}$ standard tube



<p>THIRD ANGLE PROJECTION DRAWING PREPARED IN ACCORDANCE TO BS308</p>		<p>GENERAL SURFACE FINISH: μm CLA R_a UNLESS OTHERWISE STATED</p> <p>DIMENSIONS: mm</p>		<p>TITLE</p> <p>MICE TARGET- Vacuum tube with shoulders</p>		<p>UNIVERSITY OF SHEFFIELD DEPARTMENT OF PHYSICS & ASTRONOMY SHEFFIELD S3 7RH Tel: 0114-2223543</p>	
<p>MATERIAL</p> <p>AK Steel Austenitic Stainless Steel 316</p>		<p>HEAT & SURFACE TREATMENT</p>		<p>SCALE: 3 : 1</p> <p>DATE: 12/10/07</p>		<p>DRAWING NUMBER</p> <p>TD-SU_08</p>	
<p>ALL PROPRIETARY RIGHTS IN THE SUBJECT MATTER HEREOF ARE RESERVED BY SHEFFIELD UNIVERSITY AND NO PERMISSION IS GRANTED TO REPRODUCE THIS PRINT IN WHOLE OR IN PART, OR TO DISCLOSE ANY OF THE INFORMATION UNLESS IT TO OTHERS.</p>		<p>HEAT & SURFACE TREATMENT</p>		<p>DATE: 30/11/07</p> <p>INITIAL ISSUE</p>		<p>DRAWN: M. MOHAMMAD</p> <p>DATE: 12/10/07</p>	
<p>1</p>		<p>2</p>		<p>3</p>		<p>4</p>	
<p>5</p>		<p>6</p>		<p>7</p>		<p>8</p>	
<p>F</p>		<p>E</p>		<p>D</p>		<p>C</p>	
<p>B</p>		<p>A</p>		<p>A4</p>		<p>F</p>	